



# Keeping Our Promises





Thanks to your support, we're making swift progress on our large construction projects. We are using your school bond dollars to improve learning environments for students and make our schools safer.

This is an exciting time for our district and our community, which will reap the benefits of these investments for decades to come.

## CK High and Middle School Replacement



Our largest project co-locates two schools—CK Middle and CK High—onto one campus. There are many components to a job of this size and scope, but our schedule remains on track. Crews worked over the summer to level the center of the campus and prepare the site for construction. New roads are already in, lined by curbs for sidewalks. The footprint of the campus is taking shape, with crews pouring parts of the building foundation this fall.

-  **SPRING 2017**  
Selected demolition, site work
-  **FALL 2017**  
Construction begins
-  **FALL 2018**  
High school turf field & track opens
-  **FALL 2019**  
Co-located schools complete

**What's coming next:**  
Steel columns will rise this winter, and construction will continue. We plan to move students into the new middle school in winter/spring 2019. The high school will open that fall.

## Klahowya Secondary School Addition



August marked the beginning of a new era for Klahowya athletics. We unveiled the school's new turf field and athletic track. Lights and a scoreboard were ready in time for competitions this fall. New locker rooms are complete and ready for winter sports action. The building framework is up for the addition on the north side of the building, which includes an auxiliary gym, new music room and science classrooms.




-  **SPRING 2017**  
Construction begins
-  **FALL 2017**  
Athletic field renovations complete
-  **SUMMER 2018**  
Project complete

**What's coming next:**  
The project remains within budget and is on track for full completion over the summer.

## Olympic High School Modernization



The center portion of the school was demolished this summer. Crews worked for months afterward to clear debris and prepare for the start of construction. New classrooms and temporary homes for offices were ready for the start of school in September. Large parts of the foundation were poured this fall for the building's new core. The core will include new permanent classrooms, a library, auditorium, commons area and a secure entryway.

-  **SPRING 2017**  
Break ground
-  **SUMMER 2017**  
Construction begins
-  **FALL 2018**  
Project complete

**What's coming next:**  
Walls are up around the career and technical education lab. A pedestrian bridge in front of the classroom wing is under construction; it will open before the end of this school year. We are meeting all of the schedule milestones to date.

# Jobs Well Done!



## Operations Service Center

Our newest support building opened in August. The facility brings together our transportation, food services and warehouse departments all in one place. Our maintenance and operations building is next door. This work fulfills the last major project promised to our community with the 2011 capital projects measure. That same measure rebuilt Hawk Elementary at Jackson Park and modernized Silverdale Elementary. It also funded safety repairs, upgrades and technology improvements at our other schools.



## Barker Creek Community School

Barker Creek Community School opened its doors in September and earned glowing reviews from students and families. Earlier this year, we designed and remodeled a building at McWilliams Road and Highway 303. The building has an open concept, with sliding whiteboard walls that allow for flexible room sizes. The school offers several programs in one location and provides options for students in grades K-12 who thrive in a non-traditional classroom setting.





# CAPITAL PROJECTS PROGRESS: changes taking shape!

Over the past year, we opened two new buildings and began construction on three others. Next year we'll celebrate the completion of two projects. We'll also be managing critical and required repairs and making safety and security improvements across the district.

## 2017

Construction begins at Klahowya

Construction begins at Olympic

Operations Service Center complete



## 2018

First secure entryway designs finalized; will open in spring

Construction begins on CK Campus

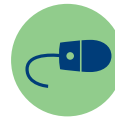
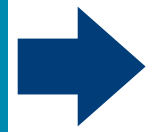
Barker Creek Community School opens



Klahowya addition complete

Olympic modernization work complete

CK High School new turf field and track complete



**CKschools.org**

For the latest updates go to About > Construction Updates

NON-PROFIT ORGANIZATION U.S. POSTAGE PAID SILVERDALE, WA OLYMPIC PRESORT

\*\*\*\*\*ECRWSS\*\*\*\*\*  
POSTAL CUSTOMER

The Central Kitsap School District provides equal educational and employment opportunity without regard to race, creed, religion, color, national origin, age, honorably-discharged veteran or military status, sex, sexual orientation, including gender expression or identity, marital status, the presence of any sensory, mental, or physical disability, the use of a trained dog guide or service animal by a person with a disability, HIV/Hepatitis C status, or other bases protected by applicable law. Equal access to activities, facilities and programs is provided to the Boy Scouts of America and other designated youth groups. Affirmative Action/Title IX Officer: Jeanne Beckon, executive director of human resources. (360) 662-1680. Section 504 Coordinator: Julie McKean, director of elementary special services, (360) 662-1044.

Central Kitsap School District No. 401

Jenne-Wright Administration Center

PO Box 8

Silverdale, WA 98383



**CKschools.org**

Go to About > News

to sign up for district news



keeping our promises



# 2017 capital projects

# CK update

Annual Capital Projects report on how your tax dollars are helping students



**CKschools.org**

Go to About > Construction Updates for more information